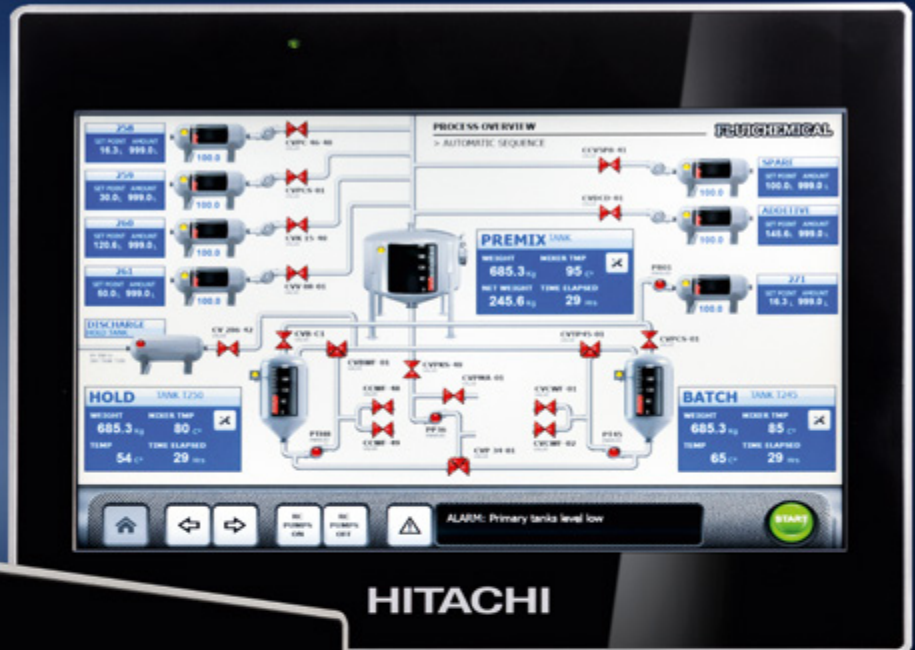


Operator Interfaces EH-HMI Series

HITACHI

Inspire the Next



DeviceNet™

PROFIBUS

CANopen

Ethernet

Modbus




Automation Solutions by Hitachi

High-end visualization with innovative design and excellent performance

Hitachi offers a wide range of operator interfaces which allow you to choose the best solution for your application. We provide two dedicated programming software packages: EH-VIEW for Text and Operator Displays and HiMobile for the latest generation Touchpanel EH-TP500 series.

Your advantages

- 4.3" – 15" Touchscreen
- High performance touch screen with innovative mechanical and metal enclosure
- Coating on all electronic boards
- PDF reader
- 5 year warranty
- Dust and splash proof enclosures to IP65
- Customized for all Hitachi PLCs and inverters, Drivers for Siemens S5/S7 is also included
- Multi-language programming

Type		 Text Display EH-TD10A	 Operator Panel EH-OP05	 Touchpanel monochrome EH-TP05
Communication	HITACHI PLC Hi-Protocol Ethernet	•	•	•
	HITACHI PLC Hi-Protocol Serial	•	•	•
	HITACHI Inverter L/SJ100, L/SJ300	•	•	•
	HITACHI Inverter SJ700B/D	-	-	-
	CODESYS V3	•	•	•
	Modbus TCP Client/Server	•	•	•
	Modbus RTU Master/Slave	•	•	•
	CANopen	•	•	•
	Profibus-DP	•	•	•
DeviceNet	•	•	•	
SIEMENS SIMATIC S5/S7	•	•	•	
Display	Type	LCD monochrome	LCD monochrome	LCD monochrome 1/4 VGA CCFL-Backlight
	Lines × characters	4 × 20	4 × 20	
	Resolution	120 × 32 Pixel	120 × 32 Pixel	320 × 240 Pixel
	Diagonal size (inches)			5.7
Keypad	Type	Integral keypad	Integral keypad	Touch-sensitive cells
	Function/System keys	4/7	12/23	
Memory	Internal memory	512 kByte Flash-EEPROM	512 kByte Flash-EEPROM	32 MB Flash
	Pluggable FLASH memory	-	-	-
Functions	Bargraph and diagram display	•	•	•
	Full graphics	•	•	•
	Multiple driver communication	-	-	•
	Multilanguage	-	-	-
	Recipe storage	-	16 kByte	32 kByte
	Password protection	•	•	•
	Alarm handling	1024 max.	1024 max.	1024 max.
	Event list	-	256 max.	1024 max.
	Screen saver	-	-	•
	Buzzer	-	-	•
	Real time clock	-	•	•
	Battery	-	•	•
	Interface	Ethernet	-	-
USB		-	-	-
Serial		1 × RS-232/422/485 1 × Aux. port	1 × RS-232 1 × RS-232/422/485 1 × Aux. port	1 × RS-232 1 × RS-232/422/485 1 × Aux. port
Expansion Slot		-	-	-
Dimensions	External dimensions (H × W) in mm	109 × 149	176 × 141	147 × 187
Programming	Programming software		EH-View	



- Gateway function, remote installation of application and remote assistance
- Internal memory up to 256MB Flash, 256MB DDR
- Supported Protocols: Hi-Protocol Ethernet, CODESYS Ethernet, Modbus TCP, Modbus RTU, CANopen, Profibus-DP, DeviceNet and more
- Interfaces: Ethernet, USB, serial ports and MPI integrated
- Many HMI features: dynamic objects, data acquisition, alarm handling, multi-language applications, e.g.
- Data display as numerical, text, bargraph, analogue gauges and graphic image formats

NEW

- New advanced and sophisticated configuration software HiMobile offering various flexible features.
- Support of OPC UA protocol to meet future IoT demands.
- Brilliant display with LED technology in full colour.
- Supporting SD card slot



Touchpanel colour

EH-TP504	EH-TP507	EH-TP510	EH-TP513	EH-TP515
•	•	•	•	•
•	•	•	•	•
-	-	-	-	-
•	•	•	•	•
•	•	•	•	•
•	•	•	•	•
•	•	•	•	•
•	•	•	•	•
•	•	•	•	•
-	-	-	-	-
•	•	•	•	•
TFT 16:9, WQVGA LED-Backlight, 64K colours	TFT 16:9, WVGA LED-Backlight, 64K colours	TFT, SVGA LED-Backlight, 64K colours	TFT 16:9, WXGA LED-Backlight, 64K colours	TFT, XGA LED-Backlight, 64K colours
480 × 272 Pixel	800 × 480 Pixel	800 × 600 Pixel	1280 × 800 Pixel	1024 × 768 Pixel
4.3	7.0	10.4	13.3	15.0
Analog resistive	Analog resistive	Analog resistive	Analog resistive	Analog resistive
128 MB Flash, 256 MB DDR	128 MB Flash, 256 MB DDR	256 MB Flash, 256 MB DDR	256 MB Flash, 256 MB DDR	256 MB Flash, 256 MB DDR
USB, SD Card	USB, SD Card	USB, SD Card	USB, SD Card	USB, SD Card
•	•	•	•	•
•	•	•	•	•
•	•	•	•	•
•	•	•	•	•
Flash memory storage	Flash memory storage	Flash memory storage	Flash memory storage	Flash memory storage
•	•	•	•	•
•	•	•	•	•
•	•	•	•	•
•	•	•	•	•
•	•	•	•	•
•	•	•	•	•
•	•	•	•	•
2 × 10/100M with integrated switch	2 × 10/100M with integrated switch	2 × 10/100M with integrated switch	2 × 10/100M with integrated switch	2 × 10/100M with integrated switch
1 × Host interface	2 × Host interfaces	2 × Host interfaces	2 × Host interfaces	2 × Host interfaces
1 × RS-232/422/485 software configurable	1 × RS-232/422/485 software configurable	1 × RS-232/422/485 software configurable	1 × RS-232/422/485 software configurable	1 × RS-232/422/485 software configurable
1 × optional plugin	2 × optional plugins	2 × optional plugins	2 × optional plugins	2 × optional plugins
107 × 147	147 × 187	232 × 287	267 × 336	392 × 307

HiMobile

HiMobile Advanced Programming Software for Hitachi EH-TP500

The latest state-of-the-art Touchpanel EH-TP500 range is programmed with the new and advanced HiMobile configuration software. This modern and innovative solution enables the rapid design of tailored applications that have been specially developed for a better user experience. The result: simple, intuitive and efficient design of HMI applications.



HiMobile and its advanced graphics engine are based on SVG technology with full object-orientated design properties. It offers major ease-of-use benefits, including simple navigation and enhanced visibility and management with remote tools and reporting, as well as better serviceability – both locally and remotely.

HiMobile client-server architecture is based on current web technologies providing users with leading edge control and remote supervision from any browser and smartphone, tablet or PC.

The ability to capture, store and share data in higher level structures make it an effective tool for integration across the entire enterprise.

An extremely flexible software option, HiMobile can be used across a wide variety of diverse applications and industries due to an extensive selection of symbols, widgets and advanced functions like email, RSS, PDF reporting, scheduler and HTML5 browser.

The Text and Operator Panel as well as the monochrome Touchpanel of the EH-HMI panels can be programmed with the proven and easy-to-use EH-View software. This minimises training and development costs. EH-View is Windows® application with a flexible 'WYSIWYG' editor (what you see is what you get) for building the operator panel.

Hitachi Europe GmbH, Niederkasseler Lohweg 191, D-40547 Düsseldorf Phone: +49 (0) 211-5283-0
www.hitachi-industrial.eu, info@hitachi-ds.com
© Hitachi Industrial Equipment Systems Co., Ltd., Japan

All company and product names in this brochure are the property of the respective companies.