

Explore Hitachi's Human Machine Interfaces

The best solutions for every application



EH-TPS Series

The entrance HMI model has been optimized and designed for budget critical applications and comes with a lightweight and low-power design.

Hitachi's human machine interface series EH-TPS enables as the easiest way of interaction between operator and machine. The EH-TPS allows the visualization of the machine status, monitoring of real-time data and of course the interactive controlling by an operator in front a control cabinet.



HIGHLIGHTS

- Display Size 4.3", 7" and 10.1"
- 16:9 Widescreen Display with a resistive touchscreen
- Powerful ARM Cortex CPU and Linux operating system
- Brilliant Display with a dimmable LED Backlight
- Programmable with the object oriented HiMobile Studio
- Built-in Ethernet, USB and Serial Port
- Lightweight and Low-power Design
- Highly reliable, Industrial Grade Components



Technical Information

		EH-TPS04	EH-TPS07	EH-TPS10
System Resources	Display – Colors	4.3" TFT 16:9 - 64K	7" TFT 16:9 - 64K	10,1" TFT 16:9 - 64K
	Resolution	480x272	800x480, WVGA	1024x600, WVGA
	Brightness	200 Cd/m2 typ.	200 Cd/m2 typ.	200 Cd/m2 typ.
	Dimming	Yes	Yes	Yes
	Touchscreen	Resistive	Resistive	Resistive
	CPU	ARM Cortex-A8 - 300 MHz	ARM Cortex-A8 - 1 GHz	ARM Cortex-A8 - 1 GHz
	Operating System	Linux 3.12	Linux 3.12	Linux 3.12
	Flash	2 GB	4 GB	4 GB
	RAM	256 MB	512 MB	512 MB
	RTC Back-up, Buzzer	Yes	Yes	Yes
Interface	Ethernet port	1 (port 0 - 10/100)		
	USB port	1 (Host v. 2.0, max. 500 mA)		
	Serial port	1 (RS-232, RS-485, RS-422, software configurable)		
Ratings	Power supply	24 VDC (10 to 32 VDC)	24 VDC (10 to 32 VDC)	24 VDC (10 to 32 VDC)
	Current Consumption	0.25 A max. at 24 VDC	0.3 A at 24 VDC (max.)	0.38 A at 24 VDC (max.)
	Input Protection	Automatic		
	Battery	Yes (Supercapacitor)		
Environment Conditions	Operating Temp	0 to 50 °C (vertical installation)		
	Storage Temp	-20°C to +70°C		
	Operating / Storage Humidity	5-85% RH, non condensing		
	Protection Class	IP66, Type 2 and 4X (front); IP20 (rear)		
Dimensions and Weights	Faceplate L x H	147x107 mm	187x147 mm	282x197 mm
	Cutout AxB	136x96 mm	176x136 mm	271x186 mm
	Weight	Approx 0.4 Kg	Approx 0.6 Kg	Approx 1.0 Kg
Approval	CE			

EH-TP500 Series

High-end visualization with innovative design and excellent performance by using the EH-TP500 series. Usable for a broad range of applications in various industry fields.

The EH-TP500 series stands for a robust, innovative design in a metal housing. Focussing on functional and performance aspects is this series a good choice in terms of visualisation, monitoring and controlling an application on-site or from a remote location. Available display sizes up to 15 inches fit to the most diverse requirements of industrial customers.



HIGHLIGHTS

- Display Size 4.3", 7", 10.4", 13.3" and 15"
- 4:3 Widescreen Display with a resistive touchscreen
- Powerful ARM Cortex CPU and WinCE operating system
- OPC UA Server and Client capability to meet IIOT demands
- Bright Display up to 300Cd/m² with a dimmable LED Backlight
- Programmable with the object oriented HiMobile Studio
- Interface options up to 2x Ethernet, 2xUSB and Serial Port
- Offers a wide range of communication capabilities



Technical Information

	EH-TP504	EH-TP507	EH-TP510	EH-TP513	EH-TP515	
System Resources	Display – Colors	4.3" TFT 16:9 LED - 64K	7" TFT 16:9 LED - 64K	10"4 TFT LED - 64K	13"3 TFT 16:9 LED - 64K	15" TFT LED - 64K
	Resolution	480x272, WQVGA	800x480, WVGA	800x600, SVGA	1280x800, WXGA	1024x768, XGA
	Brightness	150 Cd/m ² typ.	300 Cd/m ² typ.	300 Cd/m ² typ.	300 Cd/m ² typ.	300 Cd/m ² typ.
	Dimming	to 0%				
	Touchscreen	Resistive				
	CPU	ARM Cortex-A8 - 600 MHz		ARM Cortex-A8 - 1 GHz		
	Operating System	Microsoft Windows CE 6.0	Microsoft Windows CE 6.0	Microsoft Windows CE 6.0	Microsoft Windows CE 6.0	Microsoft Windows CE 6.0
	Flash	128 MB	128 MB	256 MB	256 MB	256 MB
	RAM	256 MB DDR	256 MB DDR	256 MB DDR	256 MB DDR	256 MB DDR
	RTC Back-up, Buzzer	Yes	Yes	Yes	Yes	Yes
Interface	Ethernet port	2 (port 0 - 10/100, port 1 - 10/100) with integrated Switch				
	USB port	1 (port 1 - Host V2.0)	2 (port 1 - Host V2.0, port 2 - Host V2.0/1.1)			
	Serial port	1 (RS-232, RS-485, RS-422, software configurable)				
	SD Card	Yes				
	LED	1 RGB				
	Expansion	1 slot for plug in modules	2 slot for plug in modules			
Ratings	Power supply	24 VDC (10 to 32 VDC)	24 VDC (10 to 32 VDC)	24 VDC (10 to 32 VDC)	24 VDC (10 to 32 VDC)	24 VDC (10 to 32 VDC)
	Current Consumption	0.55 A at 24 VDC (max.)	0.7 A at 24 VDC (max.)	1 A at 24 VDC (max.)	1.15 A at 24 VDC (max.)	1.25 A at 24 VDC (max.)
	Battery	Rechargeable Lithium battery, not user-replaceable				
Environment Conditions	Operating Temp	0 to +50 °C				
	Storage Temp	-20 to +70 °C				
	Operating / Storage Humidity	5-85% RH, non condensing				
	Protection Class	IP66 (front), IP20 (rear)				
Dimensions and Weights	Faceplate L x H	147x107 mm	187x147 mm	287x232 mm	336x267 mm	392x307 mm
	Cutout AxB	136x96 mm	176x136 mm	276x221 mm	326x256 mm	381x296 mm
	Weight	Approx 1.0 Kg	Approx 1.0 Kg	Approx. 2.1 Kg	Approx. 2.8 Kg	Approx 3.5 Kg
Approval	CE					

EH-TPJ Series

The new EH-TPJ field device series is Hitachi's answer to critical applications and for customers IoT demands. Best choice in terms of installation flexibility.

The new EH-TPJ field device series is Hitachi's answer to critical applications and for customers IoT demands. High-resolution displays with multitouch PCAP touchscreen, a robust glass front, full IP67 protection and extended operating temperature range just to highlight some of the product advantages. IoT device with Power over Ethernet (PoE) and an adjusted panel design enables installation flexibility. Mounting on the machine allows an easy interaction of operator and machine. Integrated OPC UA Client / Server with an internal storage up to 2 GB allows data storage and processing of variables according to the customer needs.



HIGHLIGHTS

- Display sizes 7", 10,1", 15,6" and 21,5"
- Up to full HD resolution 1920 × 1080 pixel with 16 M colours and dimmable backlight
- PCAP touch screen with multitouch allows gesture control (swipe & zoom)
- Robust glass front and extended operating temperature range between -20 °C and +55 °C
- Full IP67 for installation at harsh environment applications
- Integrated OPC UA Client / Server for data handling and IIOT demands
- Wi-Fi Connectivity



Installation Flexibility

Depending on the customer or the application demands allows the EH-TPJ series the usage as a standalone device mounted directly close to the machine operating area or the classic installation on a control cabinet.



Power over Ethernet Technology

Power over Ethernet led to reduced wiring effort in your electrical cabinet. An existing Ethernet infrastructure enables the easy integration of this series into the customer application without the needs for a separate power supply.



Wireless network compatibility

In today's world, wireless communication creates a multitude of possibilities. The whole EH-TPJ series supports the wi-fi connectivity according to the IEEE 802.11 standard.





Accessories

Wall & Device Brackets

Device Bracket
EH-HDBJ0710

Wall Bracket
EH-HDBJ1521/-WBJ

for EH-TPJ07 & EH-TPJ10

Wall Bracket
EH-HDBJ1521/-WBJ

for EH-TPJ15 & EH-TPJ21

VESA Bracket

VESA Bracket
EH-HVESABJ

for EH-TPJ07, EH-TPJ10, EH-TPJ15, EH-TPJ21

Gooseneck

Gooseneck
EH-HGNJ0710

for EH-TPJ07 & EH-TPJ10

PoE Injector

PoE Injector for Din Rail mounting
EH-HPOE

PoE Ethernet Cable

PoE Ethernet Cable 5m with M22 gland
EH-H50JH

PoE Ethernet & USB Cable

PoE Ethernet Cable 5m & USB Cable 1m
with M22 gland
EH-H50J10



Technical Information

	EH-TPJ07	EH-TPJ10	EH-TPJ15	EH-TPJ21	
System Resources	Display – Colors	7" TFT – 16M	10.1" TFT – 16M	15.6" TFT – 16M	21.5" TFT – 16M
	Resolution	1024 × 600	1280 × 800	1366 × 768	1920 × 1080
	Brightness	400 cd/m ² typ.	400 cd/m ² typ.	400 cd/m ² typ.	400 cd/m ² typ.
	Dimming	to 0%	to 0%	to 0%	to 0%
	Touchscreen	Projected capacitive – Multitouch	Projected Capacitive – Multitouch	Projected Capacitive – Multitouch	Projected Capacitive – Multitouch
	CPU	ARM Cortex-A9 dual core – 800 MHz	ARM Cortex-A9 dual core – 800 MHz	ARM Cortex-A9 quad core – 800 MHz	ARM Cortex-A9 quad core – 800 MHz
	Operating System	Linux RT	Linux RT	Linux RT	Linux RT
	Flash	4 GB	4 GB	8 GB	8 GB
	RAM	1 GB	1 GB	2 GB	2 GB
	FRAM	64 KB	64 KB	64 KB	64 KB
Real Time Clock, RTC Back-up	Yes	Yes	Yes	Yes	
Interface	Ethernet port	10/100 PoE			
	USB port	1 (Host V2.0, max. 500 mA, available with special cable)			
	LED	1 RGB			
	Sensors	Temperature, 3-Axis Accelerometer			
	Wi-Fi	IEEE 802.11a/b/g			
	Buzzer	Yes			
Ratings	Power supply	IEEE 802.3af PoE	IEEE 802.3af PoE	IEEE 802.3at PoE+	IEEE 802.3bt 4PPoE
	Power Consumption	9 W	12 W	19 W	32 W
	Battery	Yes (rechargeable)			
Environment Conditions	Operating Temp	–20 °C to +55 °C (vertical installation)			
	Storage Temp	Storage Temp –30 °C to +80 °C			
	Operating /Storage Humidity	5–85 % RH, non-condensing			
	Protection Class	IP67 (requires appropriate accessories and cables)			
Dimensions and Weights	Faceplate L × H	195.2 × 131.6 mm	264.5 × 183.1 mm	398.6 × 248 mm	534.1 × 325.6 mm
	Weight	0.7 kg	1.2 kg	4.0 kg	6.0 kg
Approval	CE				

EH-TP700 Series

The advanced and sophisticated EH-TP700 series is the best choice in terms of performance, functionality as well as visual and haptic aspects without making any compromises.

True glass front with a projected capacitive display and multitouch technology for gesture control supported by a high-performance ARM Cortex-A9 dual core enables also controlling and visualization of big sized applications.



HIGHLIGHTS

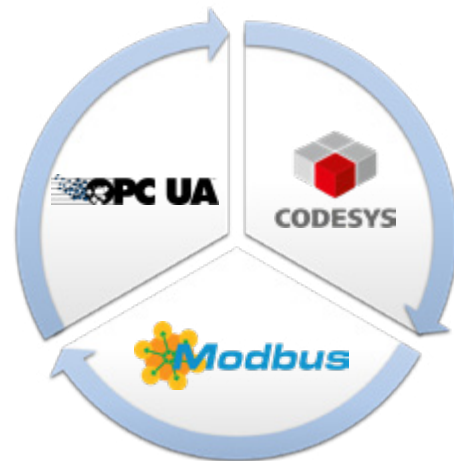
- Display sizes 5", 7", 10,1", 15,6" and 21,5"
- Up to full HD resolution 1920 × 1080 pixel with 16 M colours and dimmable backlight
- PCAP touch screen with multitouch allows gesture control (swipe & zoom)
- Up to three independent ethernet interfaces
- Robust glass front and extended operating temperature range between -20 °C and +60 °C
- Integrated OPC UA Client / Server for data handling and advanced IIOT demands
- Data transfer between different communication protocols
- Supports OPC UA, Modbus, CODESYS V3 ETH and Siemens S5 / S7 communication protocols



OPC UA Server and Client functionality and the built-in support of various MQTT Broker using the MQTT protocol facilitates the usage of the EH-TP700 series within various IIoT solution.



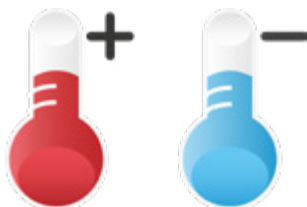
Utilizing up to three independent working ethernet ports with individual communication protocol setting allows the data exchange between these protocols





Extended Environmental Condition

The EH-TP700 series series fulfil the expectations for harsh environmental conditions. An extended temperature operating range between $-20\text{ }^{\circ}\text{C}$ and $+60\text{ }^{\circ}\text{C}$, IP66 rating in the front and a display brightness up to 500 Cd/m^2 .



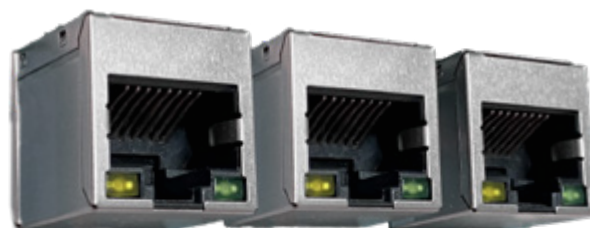
Multitouch Technology

Advanced multitouch technology enables gesture control such as swipe and zoom.



Advanced interface capability

The entire EH-TP700 series series comes with three built-in independent working ethernet ports to enable gigabit lan connectivity.





Technical Information

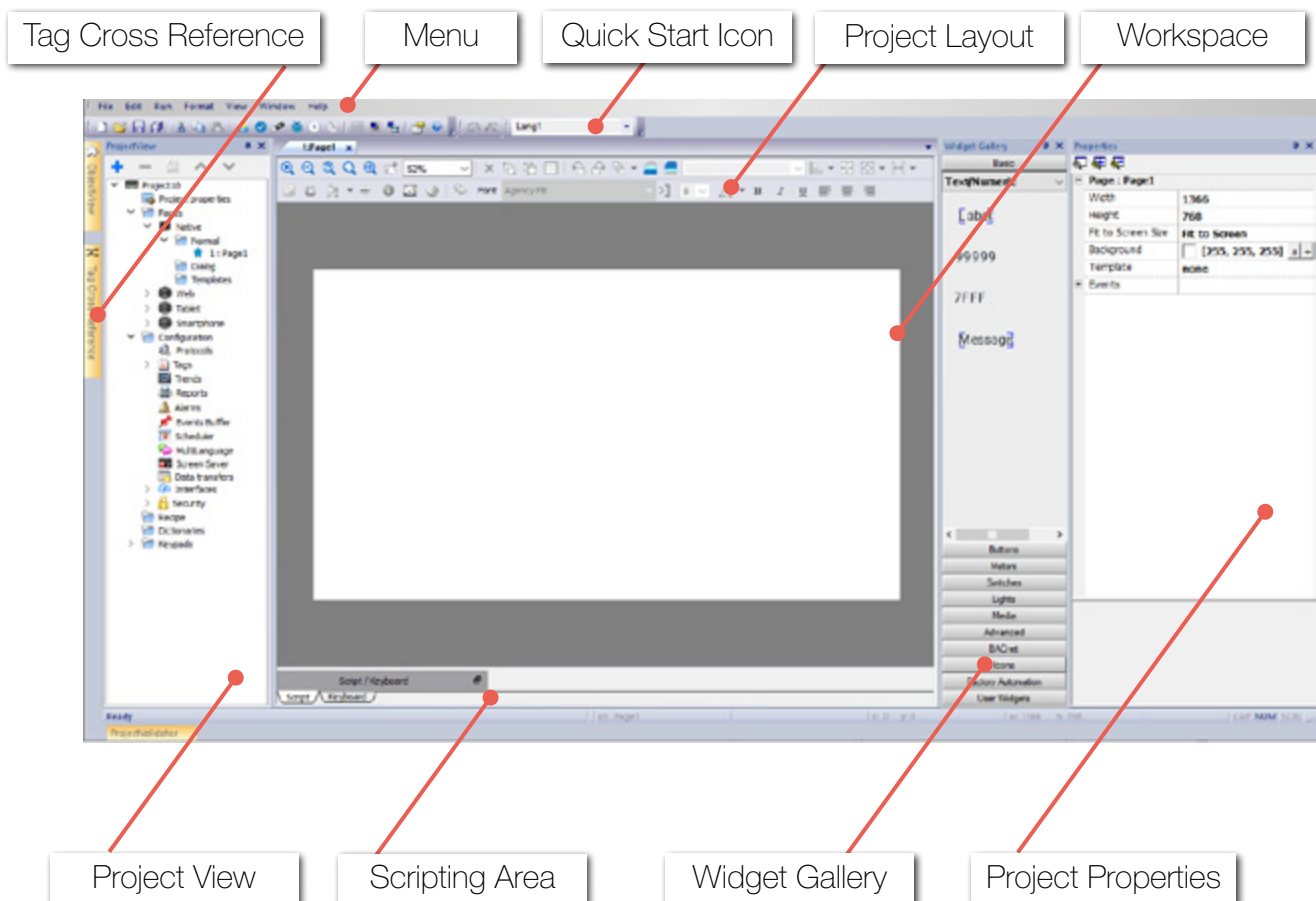
		EH-TP705	EH-TP707	EH-TP710	EH-TP715	EH-TP721
System Resources	Display – Colors	5" TFT 16:9 LED - 16M	7" TFT 16:9 LED - 16M	10.1" TFT 16:9 LED - 16M	15,6" TFT LED - 16M	21,5" TFT LED - 16M
	Resolution	800x480, WVGA	800x480, WVGA	1280x800, WXGA	1366x768, HD	1920x1080, full HD
	Brightness	300 Cd/m2 typ.	500 Cd/m2 typ.	500 Cd/m2 typ.	400 Cd/m2 typ.	300 Cd/m2 typ.
	Dimming	to 0 %	to 0 %	to 0 %	to 0 %	to 0 %
	Touchscreen	True Glass Projected Capacitive, Multitouch	True Glass Projected Capacitive, Multitouch	True Glass Projected Capacitive, Multitouch	True Glass Projected Capacitive, Multitouch	True Glass Projected Capacitive, Multitouch
	CPU	ARM Cortex-A8 dual core 1 GHz	ARM Cortex-A9 dual core 800 MHz	ARM Cortex-A9 dual core 800 MHz	ARM Cortex-A9 dual core 800 MHz	ARM Cortex-A9 dual core 800 MHz
	Operating System	Linux RT	Linux RT	Linux RT	Linux RT	Linux RT
	Flash	4 GB	4 GB	4 GB	8 GB	8 GB
	RAM	512 MB	1 GB	1 GB	2 GB	2 GB
	RTC Back-up, Buzzer	Yes	Yes	Yes	Yes	Yes
Interface	Ethernet port	2 (port 0 - 10/100, port 1 - 10/100)	3 (port 0 - 10/100/1000, port 1 - 10/100, port 2 - 10/100)			
	USB port	1 (Host V2.0, max. 500 mA)	2 (Host V2.0, max. 500 mA)			
	Serial port	1 (RS-232, RS-485, RS-422, software configurable)				
	SD Card	Yes				
Ratings	Power supply	24 VDC (10 to 32 VDC)	24 VDC (10 to 32 VDC)	24 VDC (10 to 32 VDC)	24 VDC (10 to 32 VDC)	24 VDC (10 to 32 VDC)
	Current Consumption	0.6 A at 24 VDC (max.)	0.7 A at 24 VDC (max.)	1.0 A at 24 VDC (max.)	1.2 A at 24 VDC (max.)	1.7 A at 24 VDC (max.)
	Input Protection	Electronic				
	Battery	Rechargeable Lithium battery, not user-replaceable				
Environment Conditions	Operating Temp	-20° to +60 °C (vertical installation). USB devices may limit max temperature to +50 °C.				
	Storage Temp	-20°C to +70°C				
	Operating / Storage Humidity	5-85% RH, non condensing				
	Protection Class	IP66 (front), IP20 (rear)				
Dimensions and Weights	Faceplate L x H	147x107 mm	187x147 mm	282x197 mm	422x267 mm	552x347 mm
	Cutout Ax B	136x96 mm	176x136 mm	271x186 mm	411x256 mm	541x336 mm
	Weight	1.3 Kg	1.5 Kg	2.5 Kg	4.1 Kg	6.1 Kg
Approval	CE					

HiMobile Software

HiMobile is an extremely flexible software and can be used across a wide variety of diverse applications and industries due to an extensive selection of symbols, widgets and advanced functions.

HIGHLIGHTS

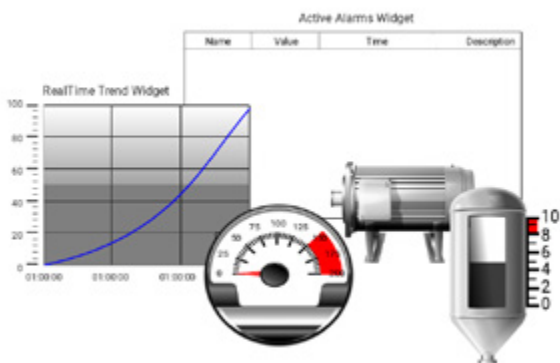
- One software platform for all Hitachi's HMI series
- Four available languages English, German, French, Chinese
- User friendly & intuitive programming layout
- Easy set-up of OPC-UA Server/client communication
- MQTT Client configuration with predefined MQTT Broker list
- HiMobile Client software for remote connectivity
- Integrated On- and Offline simulation to expedite project validation





Ease-of-use Widget Gallery

Predefined widgets such as basic buttons, switches or light as well as industry icon widget such as valves, tank or mixers can be used to integrate into the project.



JavaScripting functionality

Projects can be enhanced through utilizing and implementing individual java scripts.

```

1
2
3
4
5
6
7
8
9
10
11
12
13
14
15
16
17
18
19
20
21
22
23
24
25
26
27
28
29
30
31
32
33
34
35
36
37
38
39
40
41
42
43
44
45
46
47
48
49
50
51
52
53
54
55
56
57
58
59
60
61
62
63
64
65
66
67
68
69
70
71
72
73
74
75
76
77
78
79
80
81
82
83
84
85
86
87
88
89
90
91
92
93
94
95
96
97
98
99
100
101
102
103
104
105
106
107
108
109
110
111
112
113
114
115
116
117
118
119
120
121
122
123
124
125
126
127
128
129
130
131
132
133
134
135
136
137
138
139
140
141
142
143
144
145
146
147
148
149
150
151
152
153
154
155
156
157
158
159
160
161
162
163
164
165
166
167
168
169
170
171
172
173
174
175
176
177
178
179
180
181
182
183
184
185
186
187
188
189
190
191
192
193
194
195
196
197
198
199
200
201
202
203
204
205
206
207
208
209
210
211
212
213
214
215
216
217
218
219
220
221
222
223
224
225
226
227
228
229
230
231
232
233
234
235
236
237
238
239
240
241
242
243
244
245
246
247
248
249
250
251
252
253
254
255
256
257
258
259
260
261
262
263
264
265
266
267
268
269
270
271
272
273
274
275
276
277
278
279
280
281
282
283
284
285
286
287
288
289
290
291
292
293
294
295
296
297
298
299
300
301
302
303
304
305
306
307
308
309
310
311
312
313
314
315
316
317
318
319
320
321
322
323
324
325
326
327
328
329
330
331
332
333
334
335
336
337
338
339
340
341
342
343
344
345
346
347
348
349
350
351
352
353
354
355
356
357
358
359
360
361
362
363
364
365
366
367
368
369
370
371
372
373
374
375
376
377
378
379
380
381
382
383
384
385
386
387
388
389
390
391
392
393
394
395
396
397
398
399
400
401
402
403
404
405
406
407
408
409
410
411
412
413
414
415
416
417
418
419
420
421
422
423
424
425
426
427
428
429
430
431
432
433
434
435
436
437
438
439
440
441
442
443
444
445
446
447
448
449
450
451
452
453
454
455
456
457
458
459
460
461
462
463
464
465
466
467
468
469
470
471
472
473
474
475
476
477
478
479
480
481
482
483
484
485
486
487
488
489
490
491
492
493
494
495
496
497
498
499
500
501
502
503
504
505
506
507
508
509
510
511
512
513
514
515
516
517
518
519
520
521
522
523
524
525
526
527
528
529
530
531
532
533
534
535
536
537
538
539
540
541
542
543
544
545
546
547
548
549
550
551
552
553
554
555
556
557
558
559
560
561
562
563
564
565
566
567
568
569
570
571
572
573
574
575
576
577
578
579
580
581
582
583
584
585
586
587
588
589
590
591
592
593
594
595
596
597
598
599
600
601
602
603
604
605
606
607
608
609
610
611
612
613
614
615
616
617
618
619
620
621
622
623
624
625
626
627
628
629
630
631
632
633
634
635
636
637
638
639
640
641
642
643
644
645
646
647
648
649
650
651
652
653
654
655
656
657
658
659
660
661
662
663
664
665
666
667
668
669
670
671
672
673
674
675
676
677
678
679
680
681
682
683
684
685
686
687
688
689
690
691
692
693
694
695
696
697
698
699
700
701
702
703
704
705
706
707
708
709
710
711
712
713
714
715
716
717
718
719
720
721
722
723
724
725
726
727
728
729
730
731
732
733
734
735
736
737
738
739
740
741
742
743
744
745
746
747
748
749
750
751
752
753
754
755
756
757
758
759
760
761
762
763
764
765
766
767
768
769
770
771
772
773
774
775
776
777
778
779
780
781
782
783
784
785
786
787
788
789
790
791
792
793
794
795
796
797
798
799
800
801
802
803
804
805
806
807
808
809
810
811
812
813
814
815
816
817
818
819
820
821
822
823
824
825
826
827
828
829
830
831
832
833
834
835
836
837
838
839
840
841
842
843
844
845
846
847
848
849
850
851
852
853
854
855
856
857
858
859
860
861
862
863
864
865
866
867
868
869
870
871
872
873
874
875
876
877
878
879
880
881
882
883
884
885
886
887
888
889
890
891
892
893
894
895
896
897
898
899
900
901
902
903
904
905
906
907
908
909
910
911
912
913
914
915
916
917
918
919
920
921
922
923
924
925
926
927
928
929
930
931
932
933
934
935
936
937
938
939
940
941
942
943
944
945
946
947
948
949
950
951
952
953
954
955
956
957
958
959
960
961
962
963
964
965
966
967
968
969
970
971
972
973
974
975
976
977
978
979
980
981
982
983
984
985
986
987
988
989
990
991
992
993
994
995
996
997
998
999
1000

```



Web Access through HTML5 Technology

With HTML5 and JavaScript technology embedded in HiMobile, all that is needed to remotely monitor and control applications is a web browser with HTML5 support.





Hitachi Europe GmbH, Niederkasseler Lohweg 191, D-40547 Düsseldorf
Phone: +49 (0) 211-5283-0
www.hitachi-industrial.eu, automation.industrial@hitachi-eu.com
Hitachi Industrial Equipment Systems Co., Ltd., Japan

All company and product names in this brochure are the property of the respective companies.

Hitachi Industrial Equipment Systems Co., Ltd. (Hitachi) shall not be liable for any manufacturing loss, or any product damage due to trouble. Hitachi continually improves products. The right, therefore, is reserved to alter the designs and/or specifications without giving prior notice. Information in this brochure is subject to change without notice.

